

Waverley Borough Council Council Offices The Burys  
Godalming Surrey GU7 1HR  
14 April 2016

Our DTS Ref: 32603 Your Ref:  
WA/2016/0517

Dear Sir/Madam

**Re: LAND SOUTH OF, AMLETS WAY AND NORTH OF ROBERTS WAY, CRANLEIGH,  
SURREY, GU6**

**Waste Comments**

Following initial investigation, Thames Water has identified an inability of the existing waste water infrastructure to accommodate the needs of this application. Should the Local Planning Authority look to approve the application, Thames Water would like the following 'Grampian Style' condition imposed. "Development shall not commence until a drainage strategy detailing any on and/or off site drainage works, has been submitted to and approved by, the local planning authority in consultation with the sewerage undertaker. No discharge of foul or surface water from the site shall be accepted into the public system until the drainage works referred to in the strategy have been completed". Reason - The development may lead to sewage flooding; to ensure that sufficient capacity is made available to cope with the new development; and in order to avoid adverse environmental impact upon the community. Should the Local Planning Authority consider the above recommendation is inappropriate or are unable to include it in the decision notice, it is important that the Local Planning Authority liaises with Thames Water Development Control Department (telephone 0203 577 9998) prior to the Planning Application approval.

**Surface Water Drainage** - With regard to surface water drainage it is the responsibility of a developer to make proper provision for drainage to ground, water courses or a suitable sewer. In respect of surface water it is recommended that the applicant should ensure that storm flows are attenuated or regulated into the receiving public network through on or off site storage. When it is proposed to connect to a combined public sewer, the site drainage should be separate and combined at the final manhole nearest the boundary. Connections are not permitted for the removal of groundwater. Where the developer proposes to discharge to a public sewer, prior approval from Thames Water Developer Services will be required. They can be contacted on 0800 009 3921. Reason - to ensure that the surface water discharge from the site shall not be detrimental to the existing sewerage system.

**Water Comments**

The existing water supply infrastructure has insufficient capacity to meet the additional demands for the proposed development. Thames Water therefore recommend the following condition be imposed: Development should not be commenced until: Impact studies of the existing water supply infrastructure have been submitted to, and approved in writing by, the local planning authority (in consultation with Thames Water).

The studies should determine the magnitude of any new additional capacity required in the system and a suitable connection point. Reason: To ensure that the water supply infrastructure has sufficient capacity to cope with the/this additional demand.

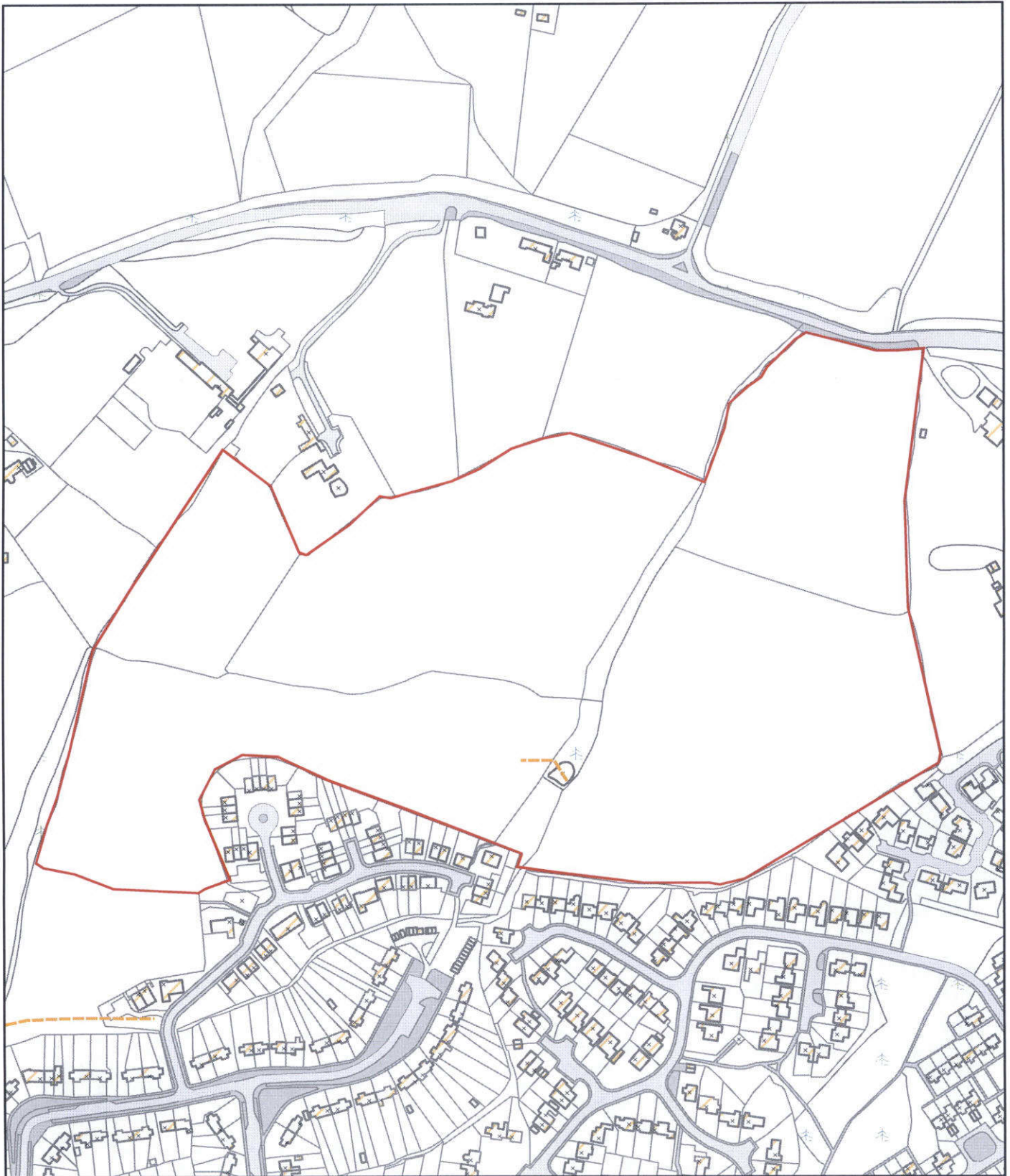
**Supplementary Comments**

Waste: Infrastructure capacity problems are known or suspected, the developer will be required to finance an impact study.

WAVERLEY BC BOROUGH PLANNING DEPT.	
DATE 15 APR 2016 REC'D	
DATE ACK	
PASS TO FOR ATTN	

WAVERLEY BC BOROUGH PLANNING DEPT.	
DATE 15 APR 2016 REC'D	
DATE ACK	
PASS TO FOR ATTN	

32603



**Thames Water  
Map**



Printed By : cbell  
Print Date : 06/04/2016  
Map Centre On: 506292, 140126  
Centre Tile No. : TQ0640SW

Comments:

At scale at A4

0 40 80 160 240 320  
Mete

Current Scale : 1:3,533

**Disclaimer:** Based on the Ordnance Survey Map with the  
Sanction of the Controller of H.M Stationery  
Office License Number:- 100019345

The position of any boundary or apparatus shown  
on this plan is given without obligation and warranty,  
and the accuracy cannot be guaranteed.

Service pipes are not shown but their presence should be anticipated.  
No liability of any kind whatsoever is accepted by Thames Water for  
any error or omission. The actual position of mains and services must  
be verified on site before any works are undertaken.

**Copyrights:** Unauthorised reproduction prohibited.  
Crown Copyright Reserved.

